



# St Berchmans College

Founded 1922

**AUTONOMOUS**

College with Potential for Excellence | Reaccredited by NAAC with A Grade



INTERNAL QUALITY ASSURANCE CELL  
ST BERCHMANS COLLEGE  
CHANGANASSERY

## REPORT OF SATISFACTION SURVEY (PARENTS)



**2018-19**

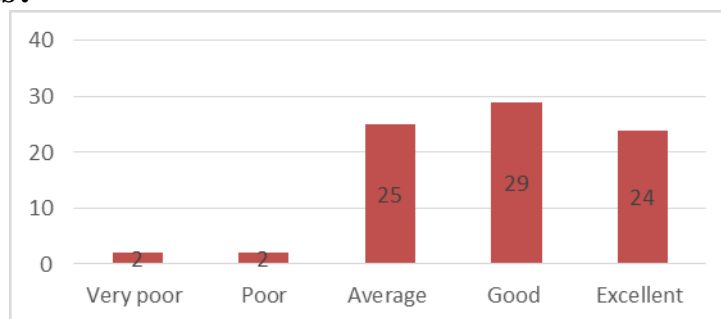
**INTERNAL QUALITY ASSURANCE CELL  
ST BERCHMANS COLLEGE CHANGANASSERY  
REPORT OF STAKE HOLDER'S SURVEY 2018-19**

<b>PERIOD</b>	2018-19
<b>CATEGORY</b>	PARENTS
<b>DATA USED</b>	PRIMARY DATA
<b>DATA COLLECTION TECHNIQUE</b>	QUESTIONNAIRE METHOD
<b>SAMPLE SIZE</b>	82
<b>ANALYSED BY</b>	DATA ANALYSIS WING –IQAC@SBC

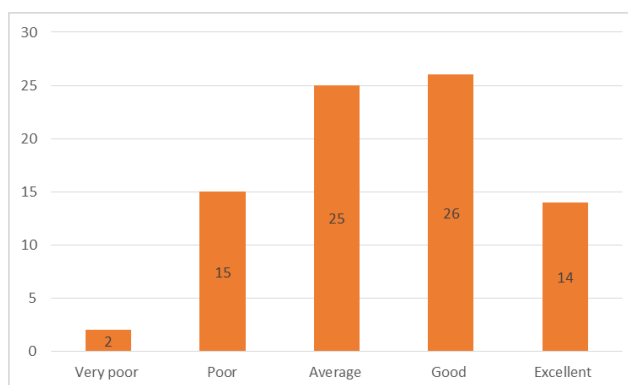
### METHODOLOGY

IQAC of St Berchmans College collects feedback from the parents of students once in every academic year using questionnaires. The details are analyzed by the data analysis wing of IQAC. The findings are used for policy formulation and decision making process of the College.

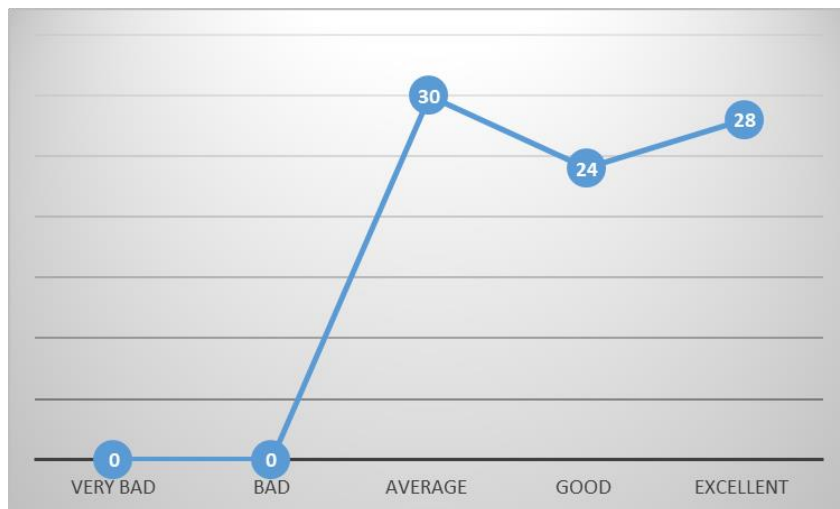
#### **How far the course is effective in imparting course-related skill to the students?**



#### **Rate the content load of the syllabus**



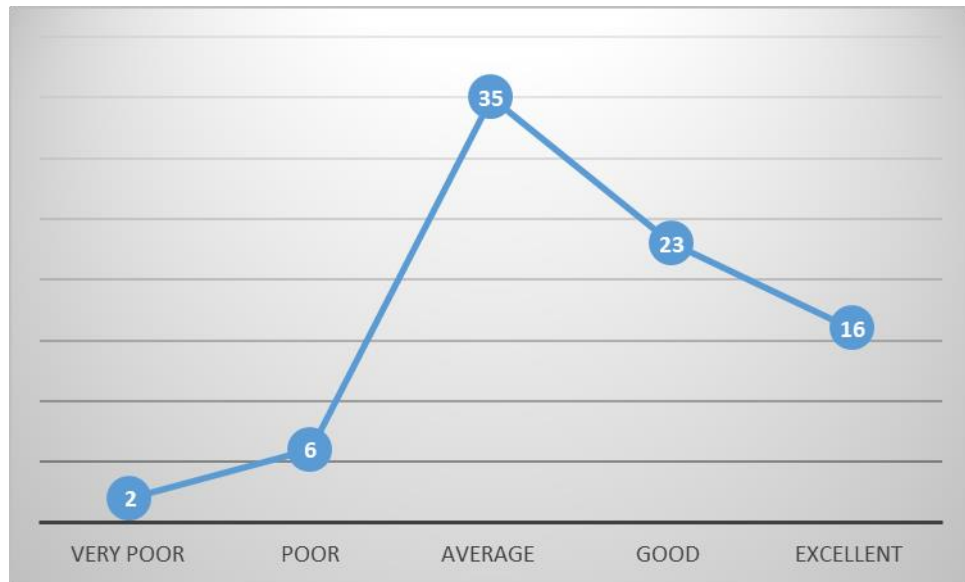
**How will you rate the evaluation process of the programme?**



**To what extent the programme (UG/PG) is successful in imparting employability skills to students?**



**How far the programme (UG/PG) is effective in providing social skills and interpersonal skills?**



**How far the learning environment is successful in imparting moral values for your children?**



### **Suggestions**

- Courses should focus on the multi skill development of students
- Attention must be given to social skills and interpersonal skills enhancement.
- Job oriented courses must be offered

### **Action Taken**

- Findings were communicated to departments for follow up.